

# CATALOGUE



JANUARY  
2026

## HARDWARE (EXTERNAL)



**TS UNITED METAL SDN. BHD.**  
“Old stuff, new life”

# CONTENTS..

<b>BRICK &amp; BLOCK</b>	<b>1 – 2</b>
<b>ROOFING</b>	<b>3 – 4</b>
<b>STRUCTURAL IRON &amp; STEEL</b>	<b>5 – 10</b>
<b>SCAFFOLDING &amp; ACCESSORIES</b>	<b>11 – 16</b>
<b>GATE &amp; GRILL</b>	<b>17 – 21</b>
<b>RACKING</b>	<b>22 – 27</b>
<b>WORK EQUIPMENT</b>	<b>28 – 30</b>
<b>STORAGE &amp; CABINET</b>	<b>31 – 37</b>
<b>SAFETY BARRICATION</b>	<b>38 – 40</b>
<b>HOSPITALITY EQUIPMENT</b>	<b>41 – 42</b>
<b>TILES</b>	<b>43 – 50</b>
<b>OTHER ACCESSORIES</b>	<b>51 – 55</b>



# BRICK & BLOCK

NO	DESCRIPTION	QTY (UNIT)	APPROX. WEIGHT PER UNIT (KG)	SELLING PRICE / UNIT
1	Concrete Pier Block 6 1/2" (H) x 7" (W)	54	9.5 kg	RM2.00
2	Concrete Block 48" (L) x 24" (W) x 24" (H)	2	1037 kg	RM200.00
3	Concrete Barrier Block 28" (L) x 18" (W) x 16" (H)	2	298 kg	RM100.00
4	Siporex Concrete Block 24" (L) x 16" (W) x 6" (H)	107	36 kg	RM7.30
5	Siporex Concrete Block 24" (L) x 16" (W) x 8" (H)	47	49 kg	RM8.30
6	Fly Ash Brick 24" (L) x 10" (W) x 8" (H)	72	30 kg	RM5.30
7	Acc Block 60cm (L) x 20cm (H) x 10cm (W)	60	9.5 kg	RM2.30
8	AAC Block 24" (L) x 8" (W) x 6" (H)	6	17 kg	RM3.30

\*Used unit – In good condition



1. Concrete Pier Block



2. Concrete Block



3. Concrete Barrier Block



4. Siporex Concrete Block



5. Siporex Concrete Block



6. Fly Ash Brick



7. Acc Block



8. AAC Block



# ROOFING

NO	DESCRIPTION	QTY (UNIT)	WEIGHT PER UNIT (KG)	SELLING PRICE / UNIT
1	Zinc – 190cm (L) x 82cm (W)	465	8.0kg	RM24.00
2	Zinc – 196cm (L) x 82cm (W)	7	4.5kg	RM13.50
3	Zinc – 288cm (L) x 83cm (W)	9	6.5kg	RM19.50
4	Zinc – 337cm (L) x 82cm (W)	6	12.5kg	RM37.50
5	S/Steel Plate – 330cm (L) x 30cm (W)	153	33.0kg	RM148.50
6	Monier Elabana Roof Tiles	2000	-	RM1.00

\* Used unit – In good condition

\* There are various type of zinc that available at our showroom

\* Zinc – RM3.00/kg

\* S/Steel Plate – RM4.50/kg



5





# **STRUCTURAL IRON & STEEL**

## HOLLOW

NO	DESCRIPTION	QTY (UNIT)	WEIGHT PER UNIT (KG)	SELLING PRICE / UNIT
1	2.5cm (H) x 5cm (W) x 50cm (L)	33	1 kg	RM3.00
2	3.8cm (H) x 6.3cm (W) x 397cm (L)	4	8 kg	RM24.00
3	5cm (H) x 5cm (W) x 540cm (L)	6	16 kg	RM48.00
4	5cm (H) x 5cm (W) x 220cm (L)	17	6 kg	RM18.00

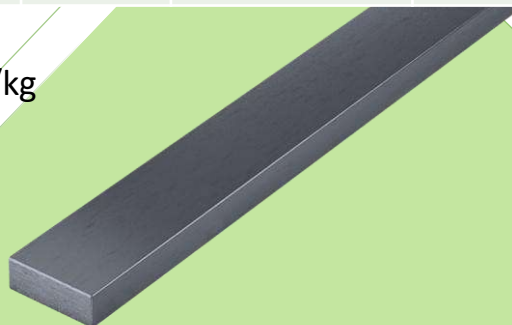


- \* Used unit – In good condition
- \* Cutting length – RM 3.00/kg
- \* Standard length (6m) – RM 4.50/kg

## MILD S/STEEL FLAT BAR

NO	DESCRIPTION	QTY (UNIT)	WEIGHT PER UNIT (KG)	SELLING PRICE / UNIT
1	2cm (W) X 600cm (L)	21	4 kg	RM12.00

- \* Used unit – In good condition
- \* Cutting / Standard length – RM 3.00/kg



# STRUCTURAL IRON & STEEL

## MILD STEEL C - CHANNEL

NO	DESCRIPTION	QTY (UNIT)	WEIGHT PER UNIT (KG)	SELLING PRICE / UNIT
1	2cm (H) X 5cm (W) X 245cm (L)	90	0.5 kg	RM1.50
2	2cm (H) x 3cm (W) x 366cm (L)	20	0.5 kg	RM1.50
3	4cm (H) x 8cm (W) x 260cm (L)	5	13 kg	RM39.00
4	4cm (H) x 8cm (W) x 420cm (L)	2	22 kg	RM66.00
5	6cm (H) X 2.5cm (W) X 600cm (L)	22	3.5 kg	RM15.75
6	6cm (H) X 4cm (W) X 299cm (L)	104	9.5 kg	RM42.75
7	6cm (H) X 5cm (W) X 442cm (L)	47	3 kg	RM9.00
8	7cm (H) X 20cm (W) X 477cm (L)	192	22 kg	RM66.00
9	7cm (H) X 20cm (W) X 481cm (L)	313	20 kg	RM60.00
10	7cm (H) X 22cm (W) X 480cm (L)	29	22 kg	RM66.00
11	11cm (H) X 5cm (W) X 610cm (L)	57	7.5 kg	RM33.75

\* Used unit – In good condition

\* Cutting length – RM 3.00/kg

\* Standard length (6m) – RM 4.50/kg



## PURLING

NO	DESCRIPTION	QTY (UNIT)	WEIGHT PER UNIT (KG)	SELLING PRICE / UNIT
1	5cm (H) X 5cm (W) X 600cm (L)	4	11kg	RM33.00
2	5cm (H) X 12cm (W) X 599cm (L)	19	25kg	RM75.00
3	5cm (H) X 12.5cm (W) X 600cm (L)	20	22kg	RM66.00
4	6cm (H) X 15cm (W) X 600cm (L)	3	28kg	RM84.00
5	7cm (H) X 20cm (W) X 480cm (L)	26	19.5kg	RM58.50
6	7cm (H) X 20cm (W) X 480cm (L)	884	19 kg	RM57.00
7	7cm (H) X 25cm (W) X 480cm (L)	1116	36 kg	RM108.00

\* Used unit – In good condition

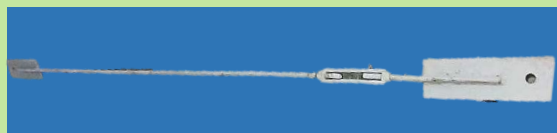
\* Cutting / Standard length – RM 3.00/kg



NO	DESCRIPTION	QTY (UNIT)	WEIGHT PER UNIT (KG)	SELLING PRICE / UNIT
1	Sag rod Purlins 200cm (L)	9	3.5 kg	RM21.00
2	Sag rod Purlins 500cm (L)	17	10 kg	RM60.00

\* Used unit – In good condition

\* Rate – RM6.00/kg



# STRUCTURAL IRON & STEEL

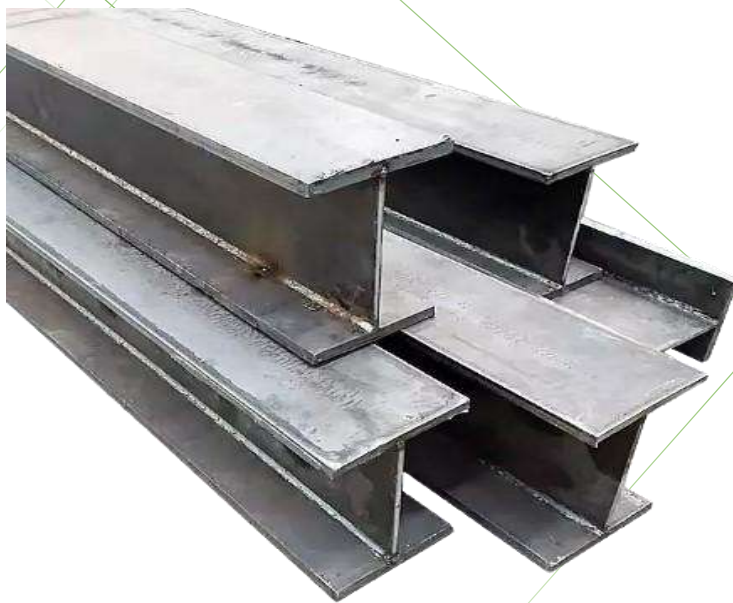
## H-BEAM

NO	DESCRIPTION	QTY (UNIT)	WEIGHT PER UNIT (KG)	SELLING PRICE / UNIT
1	10cm (H) x 20cm (W) x 613cm (L)	4	144 kg	RM432.00
2	20cm (H) x 46cm (W) x 360cm (L)	45	250 kg	RM750.00
3	20cm (H) x 46cm (W) x 420cm (L)	15	302 kg	RM906.00
4	20cm (H) x 777cm (L)	2	374 kg	RM1,122.00
5	20cm (H) x 55cm (W) x 792cm (L)	5	935 kg	RM2,805.00
6	20cm (H) x 46cm (W) x 853cm (L)	1	907 kg	RM2,721.00
7	30cm (H) x 64cm (W) x 884cm (L)	1	2075 kg	RM6,225.00

\* There are various type of H-beam that available at our showroom

\* Used unit – In good condition

\* Cutting / Standard length – RM 3.00/kg



## ANGLE IRON

NO	DESCRIPTION	QTY (UNIT)	WEIGHT PER UNIT (KG)	SELLING PRICE / UNIT
1	3cm (H) X 3cm (W) X 67cm (L)	334	0.5kg	RM1.50

\* Used unit – In good condition

\* Rate – RM 3.00/kg



## GALVANISED UNISTRUT

NO	DESCRIPTION	QTY (UNIT)	WEIGHT PER UNIT (KG)	SELLING PRICE / UNIT
1	Single Unistrut 4.1cm (H) x 4.1cm (W) x 600cm (L)	994	13.5 kg	RM81.00
2	Double Unistrut 4 cm (H) x 8 cm (W) x 600cm (L)	180	29.0 kg	RM174.00

\* Used unit – In good condition

\* Cutting length – RM 4.50/kg

\* Standard length (6m) – RM 6.00/kg



---

# SCAFFOLDING

& ACCESSORIES



## SCAFFOLDING (SET A)

NO	DESCRIPTION	QTY (UNIT)	APPROX. WEIGHT PER UNIT (KG)
1	Aluminium Scaffolding Platform 60cm (W) x 190cm (L)	7	15 kg
2	Aluminium Scaffolding Frame 130cm (H) x 146cm (L)	6	5.3 kg
3	Aluminium Scaffolding Tube Guardrail 215cm (L)	16	2 kg

\* Used unit – In good condition

\* Price per set



**RM 3,991.40**  
PER SET

# SCAFFOLDING (SET B)

NO	DESCRIPTION	QTY (UNIT)	APPROX. WEIGHT PER UNIT (KG)
1	Scaffolding Frame (Red) 76cm (H) x 123cm (L)	11	6.5kg
2	Scaffolding Trolley Base 40cm (H) x 130cm (L)	1	45 kg

- \* Used unit – In good condition
- \* Price per set



**RM 598.50**  
PER SET

## SCAFFOLDING (SET C)

NO	DESCRIPTION	QTY (UNIT)	APPROX. WEIGHT PER UNIT (KG)
1	Scaffolding Ladder Frame (Red) 94cm (H) x 150cm (L)	5	8.5 kg
2	Scaffolding Trolley Base 28cm (H) x 150cm (L)	1	53 kg

\* Used unit – In good condition

\* Price per set



**RM 418.50**  
PER SET

# SCAFFOLDING (SET D)

NO	DESCRIPTION	QTY (UNIT)	APPROX. WEIGHT PER UNIT (KG)
1	Scaffolding Ladder Frame 105cm (H) x 153cm (L)	14	8.5 kg
2	Scaffolding Trolley Base 20cm (H) x 153cm (L)	1	41 kg

\* Used unit – In good condition  
\* Price per set

**RM 688.50**  
PER SET

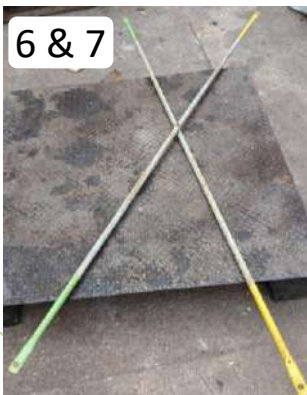


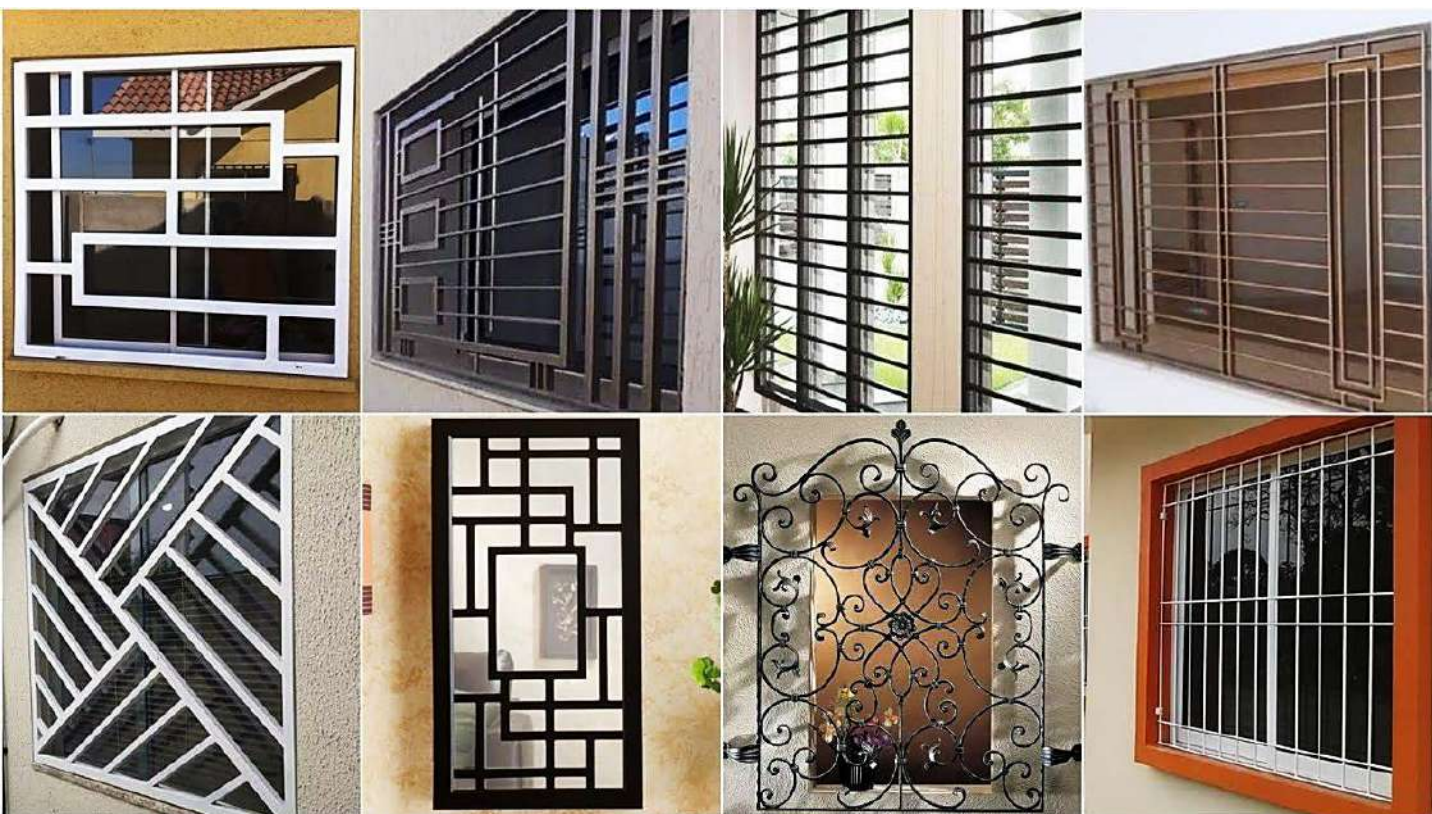
# SCAFFOLDING & ACCESSORIES

NO	DESCRIPTION	QTY (UNIT)	APPROX. WEIGHT PER UNIT (KG)	SELLING PRICE / UNIT
1	Scaffolding Ladder Frame (Red & Blue) 92cm (H) x 126cm (L)	82	7kg	RM36.00
2	Scaffolding Main Frame Only (White & Red) 170cm (H) x 126cm (L)	312	10 kg	RM37.00
3	Scaffolding Ladder 260cm (H) x 50cm (W)	12	19 kg	RM85.50
4	Scaffolding Catwalk Platform 192cm (W) x 50cm (L)	15	11 kg	RM49.50
5	Scaffolding Screw Jack 24" (H)	110	4 kg	RM14.00
6	Cross Brace 197.5cm (L)	10	2 kg	RM9.00
7	Cross Brace 224cm (L)	120	4 kg	RM10.00
8	Scaffolding Joint Pin	1918	0.2 kg	RM1.00
9	Swivel Coupler Clamp	85	0.5 kg	RM2.25
10	Scaffolding Tube 194-420cm (L)	56	-	RM3.00/kg

\* Used unit – In good condition

\* Price per unit





# GATE & GRILL

# ALUMINIUM & STAINLESS STEEL GRILL

NO	DESCRIPTION	QTY (UNIT)	WEIGHT PER UNIT (KG)	SELLING PRICE / UNIT
1	Aluminium Grill 236cm (H) x 105cm (L)	3	13kg	RM351.00
2	Stainless Steel Grill 207cm (H) x 95cm (L)	1	23kg	RM368.00
3	Stainless Steel Grill 200cm (H) x 150cm (L)	2	17kg	RM306.00
4	Stainless Steel Grill 140cm (H) x 200cm (L)	2	8kg	RM160.00
5	Stainless Steel Grill 226cm (H) x 112cm (L)	1	30kg	RM480.00
6	Stainless Steel Grill 140cm (H) x 118cm (L)	1	36kg	RM504.00

\* Used unit – In good condition

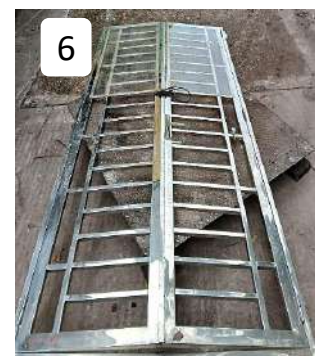
\* Price per kg:

Aluminium rate:

- 0.1kg - 10kg = RM30
- 10.1kg - 20kg = RM27
- 20.1kg - 30kg = RM24
- 30.1kg - 40kg = RM21
- 40.1kg to above = RM18

Stainless Steel rate:

- 0.1kg - 10kg = RM20
- 10.1kg - 20kg = RM18
- 20.1kg - 30kg = RM16
- 30.1kg - 40kg = RM14
- 40.1kg to above = RM12



# GRILL DOOR

NO	DESCRIPTION	QTY (UNIT)	WEIGHT PER UNIT (KG)	SELLING PRICE / UNIT
1	Wire Mesh Grill 214cm (H) x 57cm (L)	4	26kg	RM117.00
2	Grill Door Full Set 217cm (H) x 125cm (L)	1	40kg	RM180.00
3	Grill Door 202cm (H) x 80cm (L)	1	14kg	RM63.00
4	Grill Door 230cm (H) x 84cm (L)	1	16kg	RM72.00
5	Grill Door 230cm (H) x 86cm (L)	1	17kg	RM76.50
6	Grill Door 211cm (H) x 74cm (L)	2	18kg	RM81.00
7	Grill Door 185cm (H) x 60cm (L)	10	14kg	RM63.00
8	Grill Door 200cm (H) x 276cm (L)	1	34kg	RM153.00
9	Grill Door 186cm (H) x 226cm (L)	1	28kg	RM126.00

\* Used unit – In good condition

\* Rate: RM4.50/kg



# WINDOW GRILL

NO	DESCRIPTION	QTY (UNIT)	WEIGHT PER UNIT (KG)	SELLING PRICE / UNIT
1	Window Grill 173cm (H) x 183cm (L)	1	18kg	RM81.00
2	Window Grill 124cm (H) x 124cm (L)	1	12kg	RM54.00
3	Window Grill 65cm (H) x 65cm (L)	2	8kg	RM36.00
4	Window Grill 62cm (H) x 62cm (L)	1	2kg	RM9.00
5	Window Grill 48cm (H) x 62cm (L)	1	3.5kg	RM15.70

\* Used unit – In good condition

\* Rate: RM4.50/kg

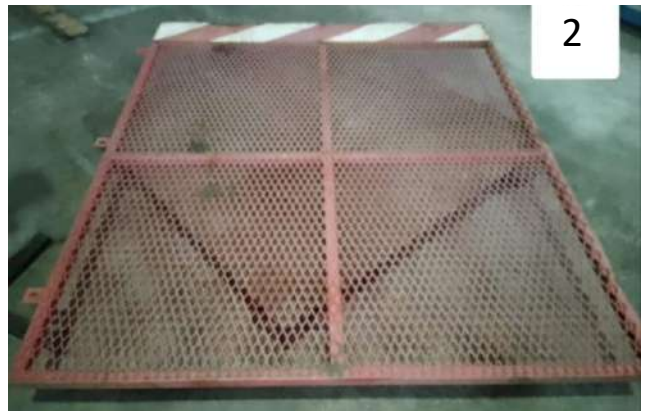


# WIRE MESH FENCING

NO	DESCRIPTION	QTY (UNIT)	WEIGHT PER UNIT (KG)	SELLING PRICE / UNIT
1	Wire Mesh Fencing 230cm (H) x 350cm (L)	1	44kg	RM198.00
2	Mesh Grills 180cm (H) x 150cm (L)	1	31kg	RM139.50
3	Mesh Grills 120cm (H) x 200cm (L)	59	29kg	RM130.50

\* Used unit – In good condition

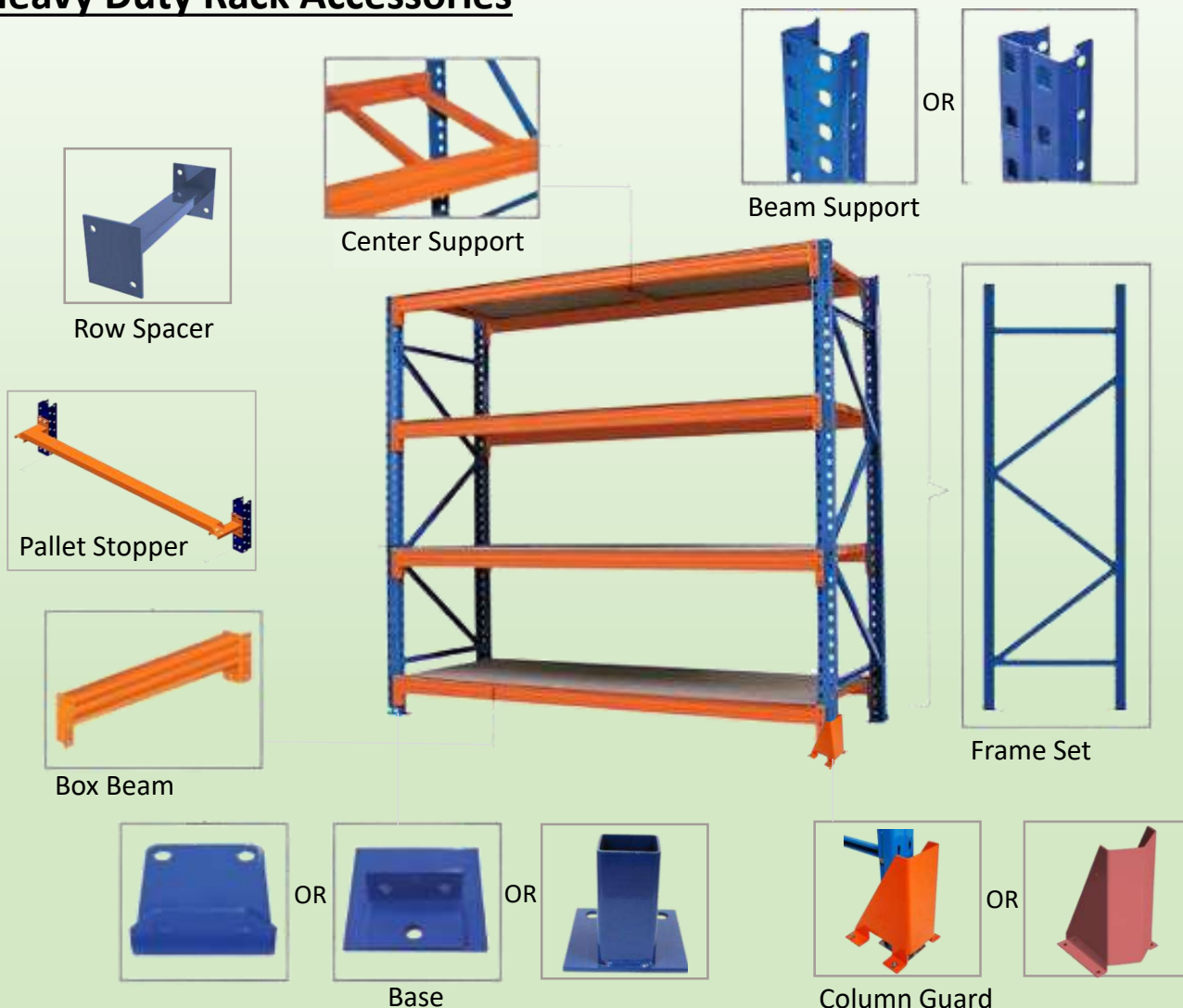
\* Rate: RM4.50/kg



# RACKING



## Heavy Duty Rack Accessories



NO	DESCRIPTION	COLOUR	QTY (UNIT)	SELLING PRICE / UNIT
1	Column Guard (Approx. weight: 5kg) 30cm (H) x 27cm (W) x 15cm (L)	Orange	12	RM30.00
2	Column Guard (Approx. weight: 7.5kg) 40cm (H) x 28cm (W) x 14cm (L)	Orange	15	RM45.00
3	Beam Box (Approx. weight: 15kg) 12cm (H) x 5cm (W) x 277.5cm (L)	Orange	18	RM90.00
4	Beam Box (Approx. weight: 16kg) 12cm (H) x 5cm (W) x 270cm (L)	Orange	2	RM96.00
5	Beam Box (Approx. weight: 14.5kg) 11cm (H) x 5cm (W) x 270cm (L)	Orange	2	RM87.00

\* Used unit – In good condition

\* Rate: RM6.00/kg

## Heavy Duty Rack Accessories

NO	DESCRIPTION	COLOUR	QTY (UNIT)	SELLING PRICE / UNIT
6	Beam Box (Approx. weight: 16.5kg) 11cm (H) x 5cm (W) x 260cm (L)	Orange	4	RM99.00
7	Beam Box (Approx. weight: 11kg) 11cm (H) x 5cm (W) x 200cm (L)	Orange	30	RM66.00
8	Box Beam (Approx. weight: 24kg) 10cm (H) x 5cm (W) x 270cm (L)	Blue	25	RM144.00
9	Box Beam (Approx. weight: 11kg) 10cm (H) x 5cm (W) x 270cm (L)	Orange	4	RM66.00
10	Beam Box (Approx. weight: 13kg) 9cm (H) x 5cm (W) x 250cm (L)	Orange	22	RM78.00
11	Beam Box (Approx. weight: 13kg) 9cm (H) x 4cm (W) x 250cm (L)	Orange	60	RM78.00
12	Box Beam (Approx. weight: 6kg) 8cm (H) x 5cm (W) x 246cm (L)	Yellow	2	RM36.00
13	Box Beam (Approx. weight: 5kg) 8cm (H) x 5cm (W) x 195cm (L)	Yellow	15	RM30.00
14	Box Beam (Approx. weight: 5kg) 8cm (H) x 5cm (W) x 137cm (L)	Orange	2	RM30.00
15	Beam Box (Approx. weight: 5kg) 8cm (H) x 5cm (W) x 142cm (L)	Orange	31	RM30.00
16	Beam Box (Approx. weight: 7.5kg) 8cm (H) x 4cm (W) x 277cm (L)	Orange	1525	RM45.00
17	Beam Box (Approx. weight: 8kg) 7.5cm (H) x 5cm (W) x 277cm (L)	Orange	88	RM48.00
18	Beam Box (Approx. weight: 11kg) 7.5cm (H) x 4cm (W) x 277cm (L)	Orange	4	RM66.00
19	Beam Box (Approx. weight: 8kg) 7cm (H) x 5cm (W) x 277cm (L)	Orange	176	RM48.00
20	Center Support (Approx. weight: 4kg) 8cm (H) x 5cm (W) x 113cm (L)	Orange	233	RM24.00
21	Center Support (Approx. weight: 3kg) 7cm (H) x 4cm (W) x 113cm (L)	Orange	73	RM18.00
22	Center Support (Approx. weight: 1.5kg) 4cm (H) x 4cm (W) x 111cm (L)	Orange	23	RM9.00

## Heavy Duty Rack Accessories

NO	DESCRIPTION	COLOUR	QTY (UNIT)	SELLING PRICE / UNIT
23	Center Support (Approx. weight: 0.5kg) 3cm (H) x 3cm (W) x 51cm (L)	Orange	12	RM3.00
24	Frame Set (Approx. weight: 94kg) 908cm (H) x 122cm (W) x 7cm (L1) x 9cm (L2)	Blue	5	RM564.00
25	Frame Set (Approx. weight: 80kg) 793cm (H) x 122cm (W) x 7cm (L1) x 9cm (L2)	Blue	9	RM480.00
26	Frame Set (Approx. weight: 72kg) 733cm (H) x 122cm (W) x 7cm (L1) x 9cm (L2)	Blue	11	RM432.00
27	Frame Set (Approx. weight: 26kg) 420cm (H) x 120cm (W) x 7cm (L1) x 9cm (L2)	Blue	3	RM156.00
28	Frame Set (Approx. weight: 34.5kg) 400cm (H) x 90cm (W) x 5cm (L)	Blue	4	RM207.00
29	Frame Set (Approx. weight: 20kg) 353cm (H) x 90cm (W) x 5cm (L1) x 6cm (L2)	Blue	4	RM120.00
30	Frame Set (Approx. weight: 33kg) 340cm (H) x 90cm (W) x 277cm (L)	Blue	185	RM198.00
31	Frame Set (Approx. weight: 13kg) 196cm (H) x 120cm (W) x 7cm (L1) x 9cm (L2)	Blue	3	RM78.00
32	Beam Support (Approx. weight: 20kg) 180cm (H) x 120cm (W) x 5cm (L1) x 9cm (L2)	Blue	19	RM120.00
26	Beam Support (Approx. weight: 12kg) 10cm (H) x 5cm (W) x 317cm (L)	White	5	RM72.00
27	Beam Support (Approx. weight: 9kg) 10cm (H) x 5cm (W) x 230cm (L)	White	6	RM54.00
28	Pallet Stopper (Approx. weight: 7.5kg) 8cm (H) x 4cm (W) x 251cm (L)	Orange	18	RM45.00
29	Pallet Stopper (Approx. weight: 7kg) 7cm (H) x 4cm (W) x 251cm (L)	Orange	42	RM42.00
30	Pallet Stopper (Approx. weight: 9.5kg) 7cm (H) x 4cm (W) x 250cm (L)	Orange	100	RM57.00
31	Pallet Stopper (Approx. weight: 7kg) 5cm (H) x 5cm (W) x 250cm (L)	Orange	6	RM42.00
32	Pallet Stopper (Approx. weight: 6kg) 5cm (H) x 5cm (W) x 200cm (L)	Orange	6	RM36.00

\* Used unit – In good condition

\* Rate: RM6.00/kg

# RACKING

## Heavy Duty Rack Accessories



**Racking Barrier**  
30cm (H) x 35cm (W)  
Quantity: 5 units  
Approx. weight: 9.5kg

**RM57.00/unit**



**Racking Barrier**  
50cm (H) x 15cm (W)  
Quantity: 13 units  
Approx. weight: 3.5kg

**RM21.00/unit**



**Racking Barrier**  
50cm (H) x 14cm (W)  
Quantity: 7 units  
Approx. weight: 5kg

**RM30.00/unit**



**Base Plate**  
Quantity: 67 units  
Approx. weight: 0.4kg

**RM1.20/unit**



**Racking Stair**  
321cm (H) x 190cm (L) x  
75cm (W)  
Quantity: 5 units  
Approx. weight: 102.5kg

**RM615.00/unit**



**Racking Stair**  
291cm (H) x 180cm (L) x  
70cm (W)  
Quantity: 1 unit  
Approx. weight: 64.5kg

**RM387.00/unit**

\* Used unit – In good condition  
\* Rate: RM6.00/kg

## Metal Rack

NO	DESCRIPTION	QTY (UNIT)	APPROX. WEIGHT PER UNIT (KG)	SELLING PRICE / UNIT
1	2 tier – 120cm (H) x 110cm (W) x 215cm (L)	1	166.5kg	RM749.25
2	2 tier – 134cm (H) x 110cm (W) x 214cm (L)	1	111.5kg	RM501.75
3	3 tier – 180cm (H) x 65cm (W) x 174cm (L)	1	209.5kg	RM942.75
4	3 tier – 190cm (H) x 66cm (W) x 210cm (L)	2	236.0kg	RM1,062.00
5	3 tier – 190cm (H) x 66cm (W) x 240cm (L)	1	257.5kg	RM1,158.75
6	4 tier – 220cm (H) x 46cm (W) x 122cm (L)	1	121kg	RM544.50
7	4 tier – 220cm (H) x 80cm (W) x 140cm (L)	2	268.0kg	RM1,206.00
8	5 tier – 220cm (H) x 47cm (W) x 125cm (L)	2	110.5kg	RM497.25
9	5 tier – 225cm (H) x 47cm (W) x 125cm (L)	1	107.5kg	RM483.75
10	6 tier – 213cm (H) x 63cm (W) x 105cm (L)	1	103.5kg	RM587.25
11	6 tier – 216cm (H) x 48cm (W) x 130cm (L)	1	160.5kg	RM722.25
12	6 tier – 218cm (H) x 47cm (W) x 92cm (L)	1	107.5kg	RM483.75
13	6 tier – 220cm (H) x 62cm (W) x 104cm (L)	1	85.0kg	RM382.50
14	6 tier – 220cm (H) x 62cm (W) x 120cm (L)	1	93.0kg	RM418.50
15	6 tier – 225cm (H) x 46cm (W) x 235cm (L)	1	52.0kg	RM234.00
16	6 tier – 225cm (H) x 60cm (W) x 104cm (L)	1	139.5kg	RM627.75
17	7 tier – 225cm (H) x 57cm (W) x 100cm (L)	1	100.5kg	RM452.25

\* Used unit – In good condition

\* Rate: RM4.50/kg





# WORK EQUIPMENT

NO	DESCRIPTION	QTY (UNIT)	WEIGHT PER UNIT (KG)	SELLING PRICE / UNIT
1	Mix Wood & Metal Table 102cm (H) x 70cm (W) x 170cm (L)	2	64 kg	RM192.00
2	Mix Wood & Metal Table 122cm (H) x 82cm (W) x 183cm (L)	1	74 kg	RM222.00
3	Mix Wood & Metal Table 66cm (H) x 41cm (W) x 152cm (L)	1	31 kg	RM93.00
4	Mix Wood & Metal Table 88cm (H) x 77cm (W) x 203cm (L)	1	94 kg	RM282.00
5	Mix Wood & Metal Table 122cm (H) x 58cm (W) x 120cm (L)	1	29 kg	RM 87.00
6	Mix Wood & Metal Table 123cm (H) x 59cm (W) x 180cm (L)	1	41 kg	RM123.00
7	Mix Wood & Metal Table 55cm (H) x 60cm (W) x 120cm (L)	2	21 kg	RM 63.00
8	Metal Table 85cm (H) x 60cm (W) x 69cm (L)	1	54 kg	RM243.00

\* Used unit – In good condition

\* Metal + wood table: RM3.00/kg

\* Fully Metal table: RM4.50/kg



# WORK EQUIPMENT



Metal Work Ladder Stand  
Various type

**RM 4.50/kg**



Glass Transport Frame  
Various size

**RM 4.50/kg**



Wheelbarrow  
Various size  
Quantity: 17 units

**RM 3.00/kg**

\*Used unit – In good condition



Breaker Handling Trolley  
138cm (H) x 180cm (L)  
Approx. weight: 50kg  
Quantity: 1 unit  
Rate: RM4.50/kg

**RM 225.00**



# STORAGE & CONTAINER



**Metal Tools Cabinet**  
110cm (H) x 90cm (W) x 110cm (L)  
Quantity: 1 unit  
Approx. weight: 79kg

**RM474.00/unit**



**Flammable Safety Cabinet**  
90cm (H) x 46cm (W) x 59cm (L)  
Quantity: 1 unit  
Approx. weight: 46kg

**RM276.00/unit**



**Metal Tools Cabinet**  
130cm (H) x 67cm (W) x 124cm (L)  
Quantity: 4 units  
Approx. weight: 101kg

**RM606.00/unit**



**Flammable Safety Cabinet**  
113cm (H) x 46cm (W) x 110cm (L)  
Quantity: 6 units  
Approx. weight: 86kg

**RM516.00/unit**



**Flammable Safety Cabinet**  
200cm (H) x 60cm (W) x 90cm (L)  
Quantity: 1 unit  
Approx. weight: 76kg

**RM456.00/unit**



**Flammable Safety Cabinet**  
60cm (H) x 46cm (W) x 110cm (L)  
Quantity: 1 unit  
Approx. weight: 52kg

**RM312.00/unit**

\* Used unit – In good condition  
\* Rate: RM6.00/kg

# STORAGE & CONTAINER



## Metal Containers

57" (L) x 43" (W) x 28" (H)

Quantity: 1 unit

Approx. weight: 188kg

**RM 846.00**



## Waste Container Metal

22" (L) x 48" (W)

Quantity: 1 unit

Approx. weight: 294kg

**RM 1,323.00**



## Metal Container

62" (L) x 48" (W) x 24" (H)

Quantity: 4 unit

Approx. weight: 260kg

Rate: RM4.50/kg

**RM 1,170.00**



## Skin Pan Metal

71" (L) x 48" (W) x 18" (H)

Quantity: 1 unit

Approx. weight: 115kg

**RM 517.50**

\*Used unit – In good condition

\* Rate: RM4.50/kg



## Pallet Tainer

220cm (H) x 120cm (W) x 140cm (L)

Quantity: 1 unit

Approx. weight: 79kg

**RM 603.00**



## Pallet Tainer

150cm (H) x 120cm (W) x 122cm (L)

Quantity: 3 units

Approx. weight: 52kg

**RM 234.00**



## Pallet Tainer

114cm (H) x 119cm (W) x 118cm (L)

Quantity: 1 unit

Approx. weight: 69kg

**RM 310.50**



## Pallet Tainer

140cm (H) x 115cm (W) x 143cm (L)

Quantity: 1 unit

Approx. weight: 74kg

**RM 333.00**

\* Used unit – In good condition

\* Rate: RM4.50/kg

## STORAGE & CONTAINER



### Mesh storage basket (Metal)

92cm (H) x 92cm (W) x 152cm (L)

Quantity: 1 unit

Rate: RM4.50/kg

**RM 270.00**



### Metal Lifting Cage

147cm (L) x 121.9cm (W) x 170cm (H)

Quantity: 1 unit

Approx. weight: 343kg

Rate: RM4.50/kg

**RM 1,543.50**



### S/steel Lifting Cage

107cm (L) x 100cm (W) x 170cm (H)

Quantity: 1 unit

Approx. weight: 215.5kg

Rate: RM12/kg

**RM 2,586.00**



### Cargo Bucket (Metal)

178cm (L) x 110cm (W) x 106cm (H)

Quantity: 10 units

Approx. weight: 176.5kg

Rate: RM4.50/kg

**RM 794.25**

\*Used unit – In good condition



**Plastic Waste Bin**

910cm (H) x 95cm (W) x 106cm (L)

Quantity: 4 units

Approx. weight: 62kg

**RM 279.00/unit**



**Plastic Container**

114cm (H) x 110cm (W) x 120cm (L)

Quantity: 4 units

Approx. weight: 67kg

**RM 301.50/unit**



**Drum (Metal)**

200L

Quantity: 38 units

**RM 40.00/unit**



**Garbage bin (Plastic)**

120cm (L) x 100cm (W) x 135cm (H)

Quantity: 8 units

Approx. weight: 49.5kg

**RM 350.00/unit**

\* Used unit – In good condition

# STORAGE & CONTAINER



**Chemical Storage (Metal)**  
210cm (L) x 120cm (W) x 220cm (H)  
Quantity: 1 unit  
Approx. weight: 190kg  
Rate: RM6.00/kg

**RM 1,140.00**



**Chemical Storage (Metal)**  
150cm (L) x 153cm (W) x 230cm (H)  
Quantity: 1 unit  
Approx. weight: 230kg  
Rate: RM6.00/kg

**RM 1,380.00**



**Concrete Bucket (Metal)**  
51" (H) x 49" (W)  
Quantity: 1 unit  
Approx. weight: 267kg  
Rate: RM4.50/kg

**RM 1,201.50**

\*Used unit – In good condition





## METAL SAFETY RAILING

**SIZE:** Various size

**WEIGHT:** Different weight

**PRICE:** RM6.00 per kg

\*Used unit – In good condition

## SAFETY BOLLARD

**SIZE:** 102cm (H) x 14cm (W)

**QUANTITY:** 4 units

**APPROX. WEIGHT:** 18.5kg

**PRICE:** RM3.00 per kg

\*Used unit – In good condition



## SAFETY BOLLARD

**SIZE:** 122cm (H) x 17cm (W)

**QUANTITY:** 16 units

**APPROX. WEIGHT:** 52.5kg

**PRICE:** RM3.00 per kg

\*Used unit – In good condition

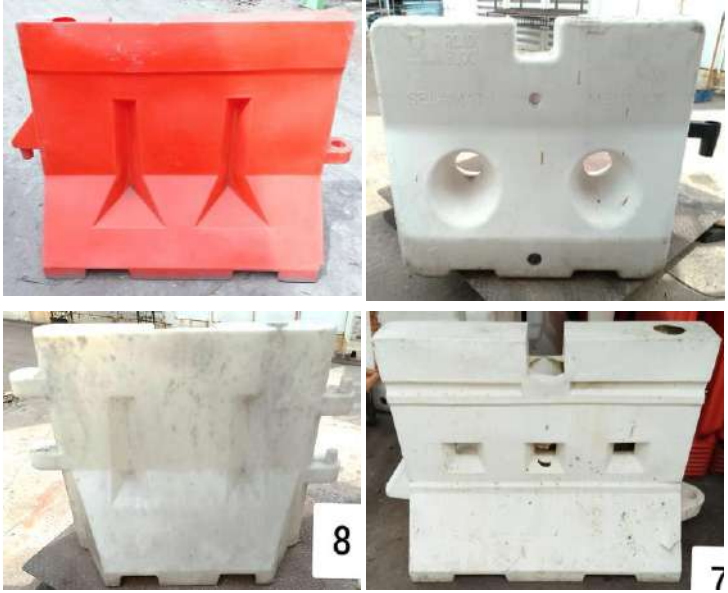
**ROAD HOARDING BARRIER**

**COLOUR:** RED

**QUANTITY:** 50 units

**PRICE:** RM55.00 per unit

\*Used unit – In good condition



**ROAD BARRIER**

**COLOUR:** RED / WHITE

**QUANTITY:** 85 units

**PRICE:** RM40.00 per unit

\*Used unit – In good condition

# HOSPITALITY

## EQUIPMENT





**Steel Basket Trolley**  
163cm (H) x 183cm (L) x 107cm (W)  
Quantity: 1 unit  
Approx. weight: 102kg

**RM459.00/unit**



**Adjustable Dish Caddy**  
78cm (H) x 84cm (L) x 72cm (W)  
Quantity: 5 units  
Approx. weight: 26kg

**RM300.00/unit**



**Dish Basket Trolley**  
90cm (H) x 102cm (L) x 56cm (W)  
Quantity: 3 units  
Approx. weight: 27kg

**RM162.00/unit**



**Ice Caddy Trolley**  
65cm (H) x 90cm (L) x 60cm (W)  
Quantity: 2 units  
Approx. weight: 21kg

**RM200.00/unit**



**Housekeeping Trolley**  
150cm (H) x 138cm (L) x 560cm (W)  
Quantity: 5 units  
Approx. weight: 79kg

**RM355.50/unit**



**Food Pan Carrier**  
120cm (H) x 46cm (L) x 65cm (W)  
Quantity: 1 unit  
Approx. weight: 37kg

**RM500.00/unit**

\* Used unit – In good condition



# TILES

# FIRST GRADE TILES



**NICO GRANITE**  
(2ft x 1ft)

**RM 4.00**  
QTY : 2,500 NOS



**GUOCERA**  
(330mm x 250mm)

**RM 2.80**  
QTY : 1,000 NOS



**MML**  
(330mm x 250mm)

**RM 2.80**  
QTY : 1,000 NOS



**GUOCERA**  
(330mm x 250mm)

**RM 2.80**  
QTY : 354 NOS



(450mm x 300mm)

**RM 5.00**  
QTY : 7,000 NOS



**PORCELAIN TILES**  
(600mm x 1200mm)

**RM 36.00**  
QTY : 1,090 NOS

\* We have more various tiles design that are available at our showroom

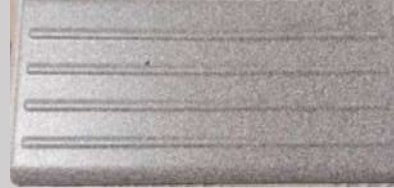
\* Unused unit – In good condition

# FIRST GRADE TILES



(1ft x 1ft)

**RM 4.00**  
QTY : 40 NOS



**STAIRCASE NOSING**  
(80mm x 200mm)

**RM 0.50**  
QTY : 5,000 NOS

# GLASS BLOCK



(190mm x 190mm)

**RM 4.00**  
QTY : 44 NOS



(190mm x 190mm)

**RM 4.00**  
QTY : 17 NOS

- \* We have more various tiles design that are available at our showroom
- \* Unused unit – In good condition

# SECOND GRADE TILES



**(2ft x 1ft)**

**RM 2.50**  
QTY : 293 NOS



**JU TAO**  
**(2ft x 1ft)**

**RM 2.50**  
QTY : 1,363 NOS



**(2ft x 1ft)**

**RM 2.50**  
QTY : 278 NOS



**(2ft x 1ft)**

**RM 2.50**  
QTY : 168 NOS



**GRANITE TILES**  
**(2ft x 1ft)**

**RM 30.00**  
QTY : 45 NOS



**GRANITE TILES**  
**(2ft x 1ft)**

**RM 30.00**  
QTY : 251 NOS

\* We have more various tiles design that are available at our showroom

\* Unused unit – In good condition

# SECOND GRADE TILES



**(2ft x 1ft)**

**RM 2.50**  
QTY : 565 NOS



**GRANITE TILES**  
**(2ft x 2ft)**

**RM 60.00**  
QTY : 77 NOS



**(2ft x 2ft)**

**RM 5.00**  
QTY : 560 NOS



**(2ft x 1ft)**

**RM 2.50**  
QTY : 370 NOS



**(2ft x 1ft)**

**RM 2.50**  
QTY : 228 NOS



**JINHAO**  
**(1ft x 1ft)**

**RM 3.00**  
QTY : 1,000 NOS

\* We have more various tiles design that are available at our showroom

\* Unused unit – In good condition

# SECOND GRADE TILES



**NIRO GRANITE**  
**(1ft x 1ft)**

**RM 1.50**  
**QTY : 120 NOS**



**(300mm x 240mm)**

**RM 1.50**  
**QTY : 46 NOS**



**(200mm x 200mm)**

**RM 1.40**  
**QTY : 168 NOS**



**GRANITE TILES**  
**(600mm x 900mm)**

**RM 90.00**  
**QTY : 25 NOS**



**(1000mm x 200mm)**

**RM 7.00**  
**QTY : 110 NOS**



**(500mm x 250mm)**

**RM 3.00**  
**QTY : 130 NOS**

\* We have more various tiles design that are available at our showroom

\* Unused unit – In good condition

# SECOND GRADE TILES



**(600mm x 150mm)**

**RM 4.00**  
**QTY : 96 NOS**



**Stone**  
**(300mm x 150mm)**

**RM 3.00**  
**QTY : 19 NOS**

- \* We have more various tiles design that are available at our showroom
- \* Unused unit – In good condition

# THIRD GRADE TILES - MIX TILES



1. 200mm x 200mm



2. 250mm x 330mm



3. 300mm x 300mm



4. 300mm x 600mm



5. 430mm x 430mm

NO	DESCRIPTION	SELLING PRICE/ UNIT
1	200mm x 200mm	RM 1.00
2	250mm x 330mm	RM 0.50
3	300mm x 300mm	RM 0.50
4	300mm x 600mm	RM 1.00
5	430mm x 430mm	RM 2.00

\* We have more various tiles design that are available at our showroom

\* Unused unit – In good condition



# OTHER ACCESSORIES

**METAL DRAIN COVER**

NO	SIZE (CM)	QTY (UNIT)	WEIGHT PER UNIT (KG)	SELLING PRICE / UNIT
1	70cm (L) x 70cm (W)	12	34.5kg	RM155.25
2	137cm (L) x 95cm (W)	2	74.5kg	RM335.25
3	96.5cm (L) x 50cm (W)	8	25.5kg	RM114.75
4	60cm (L) x 28.5cm (W)	85	6kg	RM27.00
5	82cm (L) x 28.5cm (W)	8	9kg	RM40.50
6	67.5cm (L) x 67.5cm (W)	23	34kg	RM153.00
7	52.5cm (L) x 52.5cm (W)	5	21kg	RM94.50
8	59cm (L) x 38cm (W)	16	34kg	RM153.00
9	92cm (L) x 64cm (W)	42	30kg	RM135.00

\* There are various pattern & size of drain cover that available at our showroom

\* Used unit – In good condition

\* Rate RM4.50/kg



### PARKING POLE

**SIZE:** 225cm x 237cm

**QUANTITY:** 18 units

**WEIGHT:** 57 kg

**PRICE:** RM256.50/unit  
(RM4.50/KG)



\*Used unit – In good condition

### GITTERROST GRILL

**SIZE:** 100cm (W) X 133cm (L)

**QUANTITY:** 19 units

**WEIGHT:** 24 kg

**PRICE:** RM108.00/unit  
(RM4.50/KG)



\*Used unit – In good condition

**SOLAR PANEL BRACKET & POLE**

NO	ITEM SIZE (CM)	MATERIAL	QTY (UNIT)	WEIGHT PER UNIT (KG)	SELLING PRICE / UNIT
1	Solar Panel Bracket 84cm x 6cm	Steel	40	4 kg	RM18.00
2	Solar Panel Bracket 108cm x 4cm	Steel	52	4 kg	RM18.00
3	Solar panel pole 273cm (L)	Steel	11	17 kg	RM76.50

\* Used unit – In good condition

\* Rate: RM4.50/kg



**SOLAR PANEL BRACKET**



**SOLAR PANEL POLE**

## OTHER ACCESSORIES



### METAL FRAME

290cm (H) x 110cm (W) x 214cm (L)

Quantity: 6 units

Approx. weight: 44kg

Rate price: RM3.00/kg

**RM 132.00**



### METAL PALLET

15cm (H) x 115cm (W) x 129cm (L)

Quantity: 19 units

Approx. weight: 47kg

Rate price: RM4.50/kg

**RM 211.50**



### METAL PALLET

9cm (H) x 107cm (W) x 140cm (L)

Quantity: 60 units

Approx. weight: 14.5kg

Rate price: RM4.50/kg

**RM 65.25**



### PALLET TROLLEY

100cm (W) x 150cm (L)

Quantity: 9 units

Approx. weight: 14.5kg

Rate price: RM3.00/kg

**RM 43.50**

\*Used unit – In good condition



06-312 3456



019-626 3471 (MEOW)

013-665 9990 (JUN WEI)

016-207 3471 (JAMAL)

019- 655 5867 (TAMIL)

011-6093 1312 (MIRA)



219-1 Batu 8, Bertam Ulu, 76450  
Tanjong Minyak, Melaka



marketingp024@gmail.com

**\* AVAILABLE WHILE STOCKS LAST**



**TS UNITED METAL SDN. BHD.**

“Old stuff, new life”